

Copper Balancing PCB's

Layout examples in slides are from one of my boards enjoy the organic style routing 😊

Power Point Presentation By
Andy Carpenter 2025





Copper Balancing on PCBs

Copper balancing is a crucial step in PCB (Printed Circuit Board) design that ensures an even distribution of copper across all layers of the board. This process prevents issues related to manufacturing, warping, and electrical performance. Here's a detailed explanation of why and how copper balancing is implemented in PCB design.

Why is Balancing Important?

1. Prevents PCB Warping and Bowing

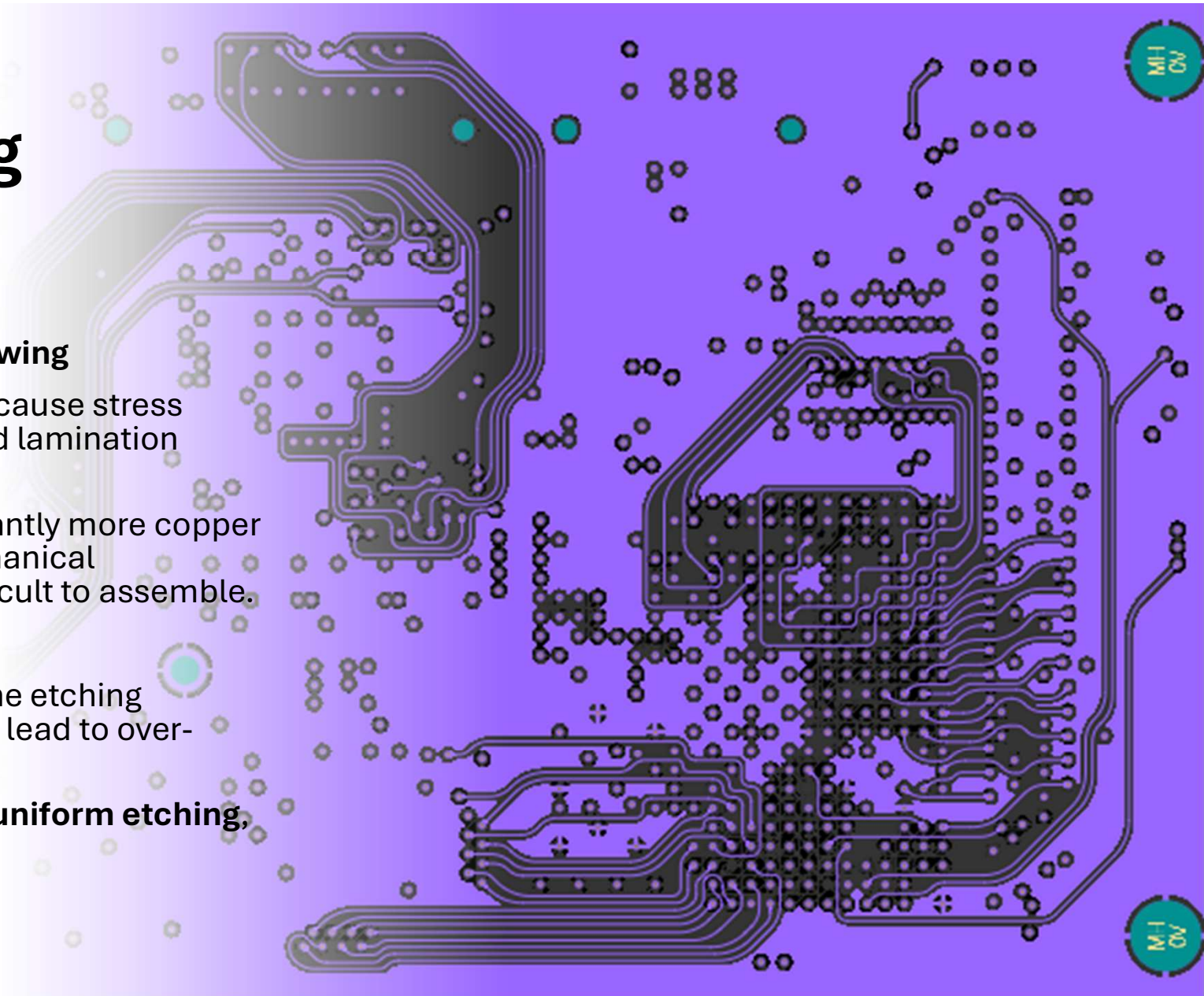
Uneven copper distribution can cause stress imbalances during the etching and lamination processes.

If one side of the PCB has significantly more copper than the other, it can lead to mechanical deformation, making the PCB difficult to assemble.

2. Improves Etching Accuracy

When copper is removed during the etching process, **uneven distribution** can lead to over-etched or under-etched areas.

A balanced copper layer ensures **uniform etching**, leading to precise trace widths.



Why is Balancing Important?

3. Enhances Electrical Performance

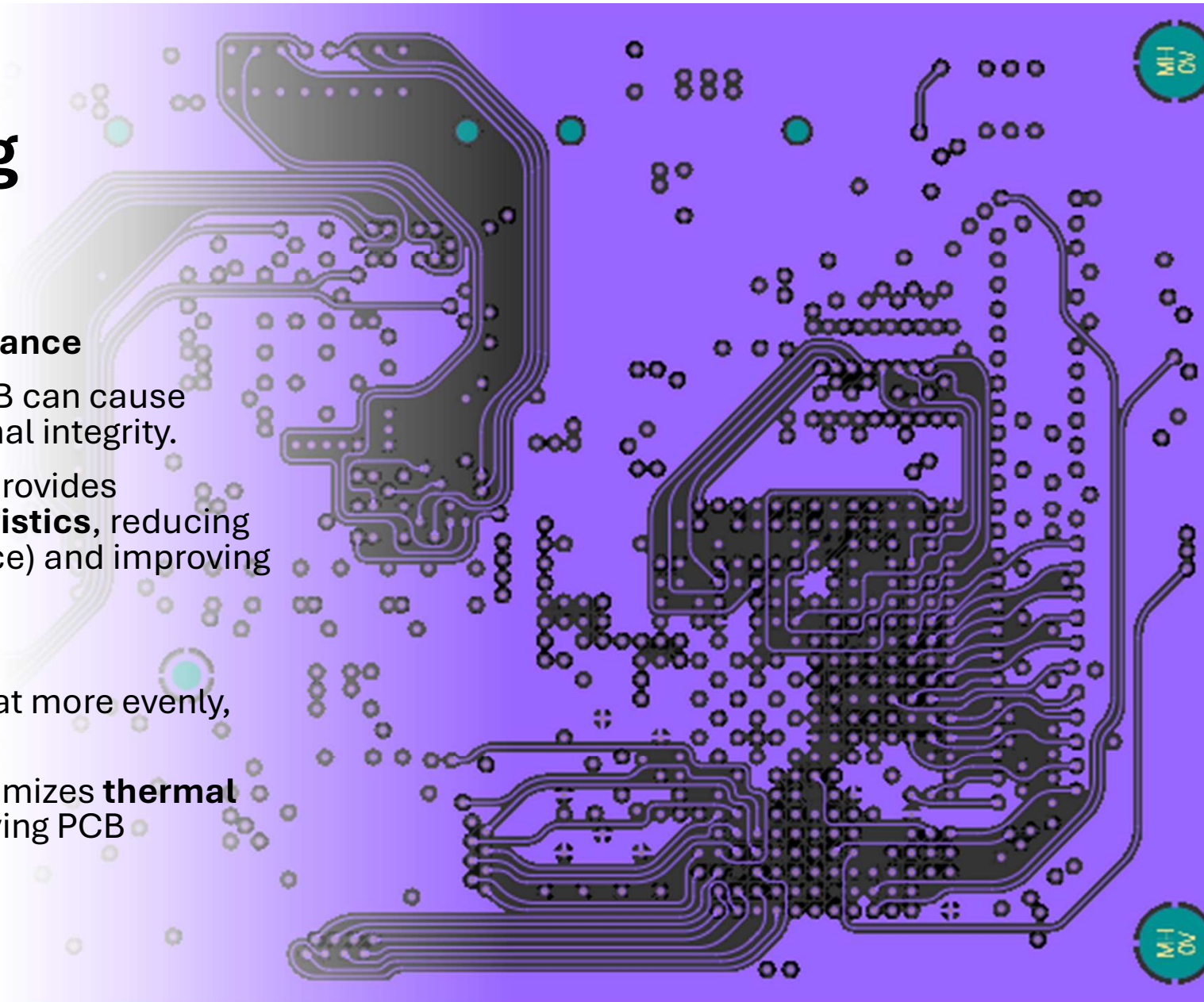
Large copper-free areas on a PCB can cause variations in impedance and signal integrity.

A well-balanced copper design provides **consistent electrical characteristics**, reducing EMI (Electromagnetic Interference) and improving signal transmission.

4. Better Thermal Management

Copper layers help distribute heat more evenly, preventing hot spots.

Uniform copper distribution minimizes **thermal expansion mismatches**, improving PCB reliability.

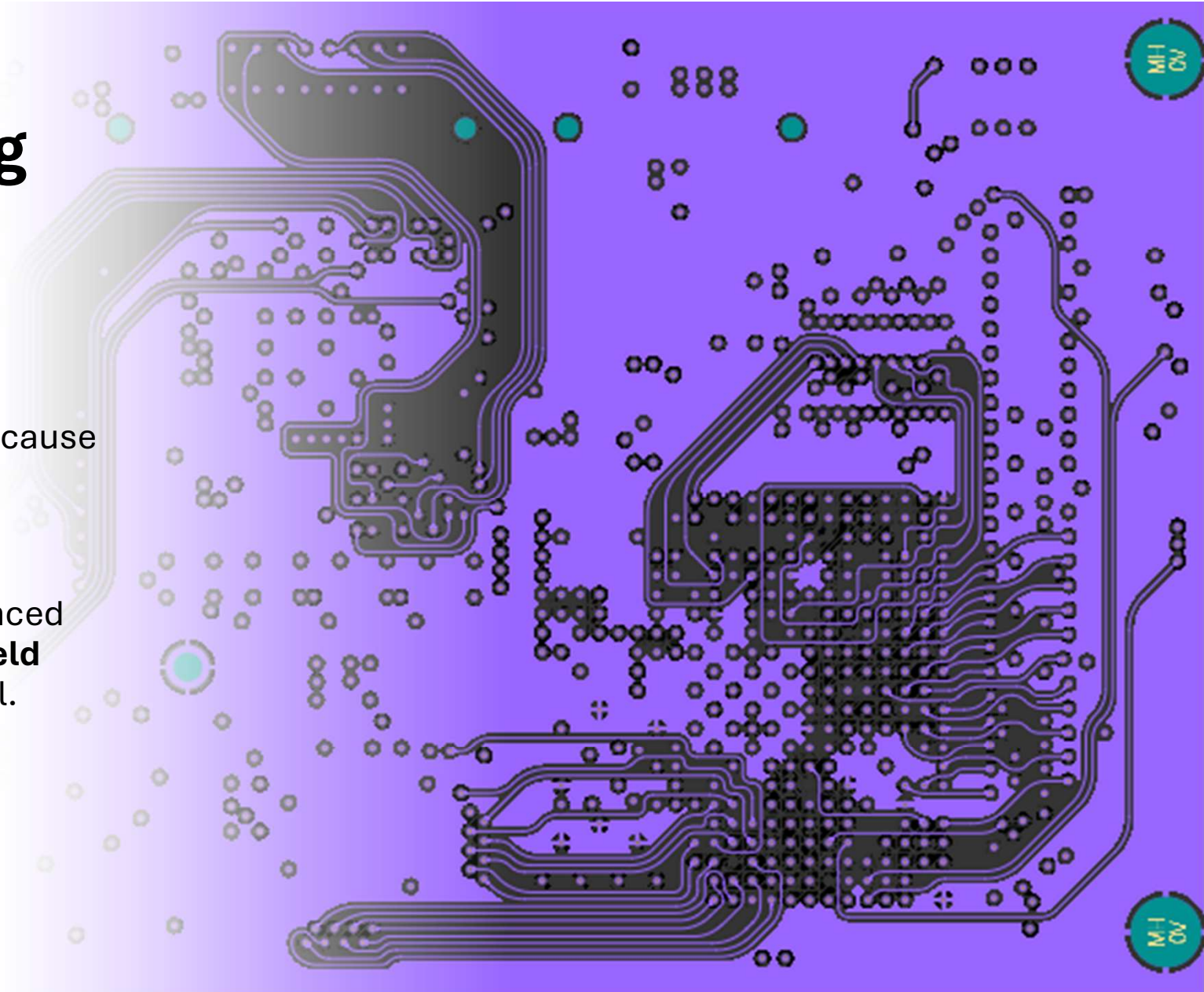


Why is Balancing Important?

5. Facilitates Manufacturing

Uneven copper distribution can cause issues during the **lamination process**, leading to defects like delamination or air bubbles.

PCB manufacturers prefer balanced copper layers to **ensure high yield rates** and better process control.



How to Achieve Copper Balancing?

1. Use Copper Fills or Plane Layers

Adding **copper pours (fills)** in low-density areas helps balance copper weight.

Ground and power planes can be strategically placed to improve copper uniformity.

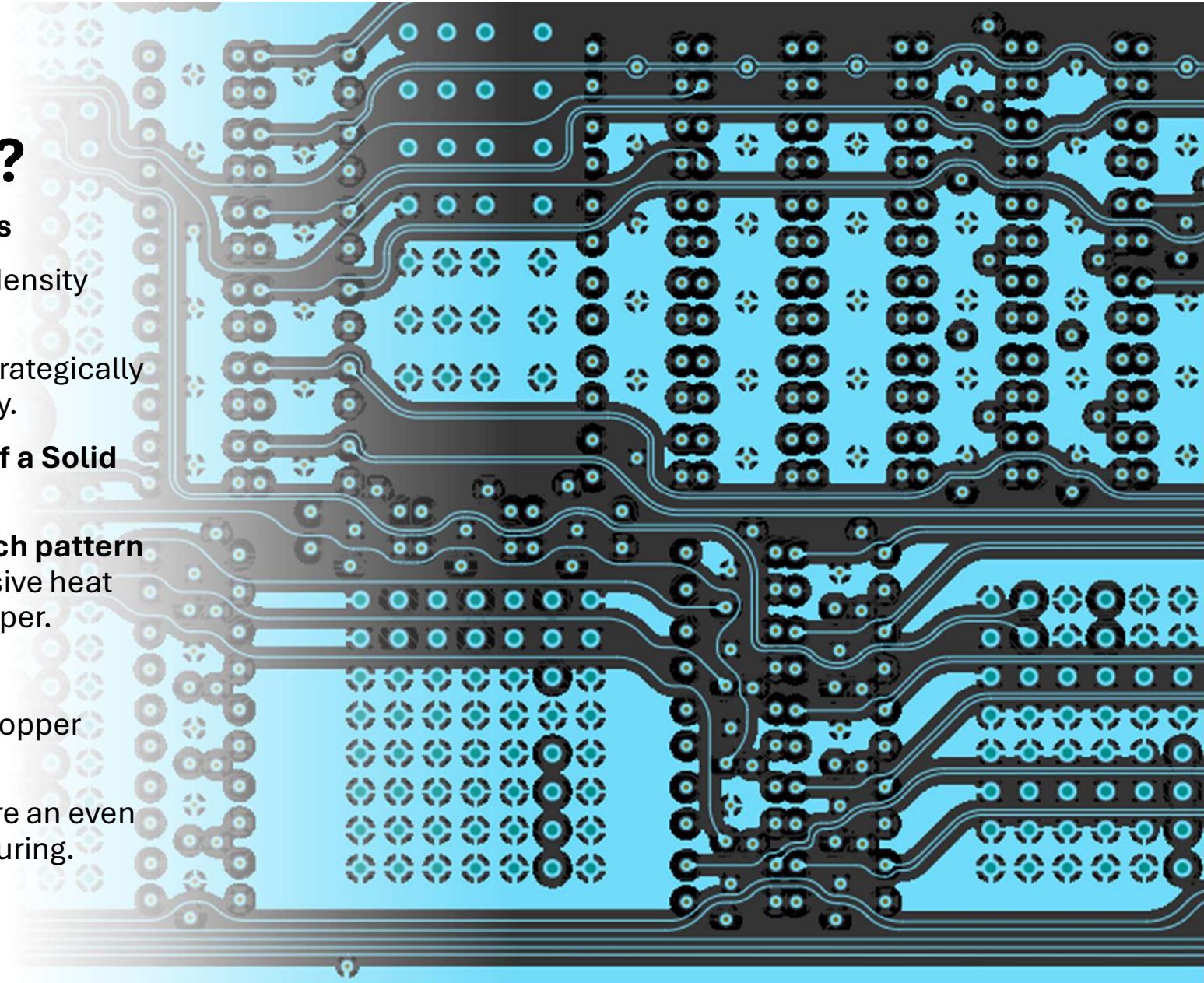
2. Apply a Hatch Pattern Instead of a Solid Fill

Instead of a **solid copper fill**, a **hatch pattern** (grid) can be used to prevent excessive heat absorption while still balancing copper.

3. Use Dummy Traces or Vias

Dummy traces are non-functional copper traces used to maintain uniformity.

Dummy vias may be added to ensure an even **plating thickness** during manufacturing.



How to Achieve Copper Balancing?

4. Optimize Layer Stackup

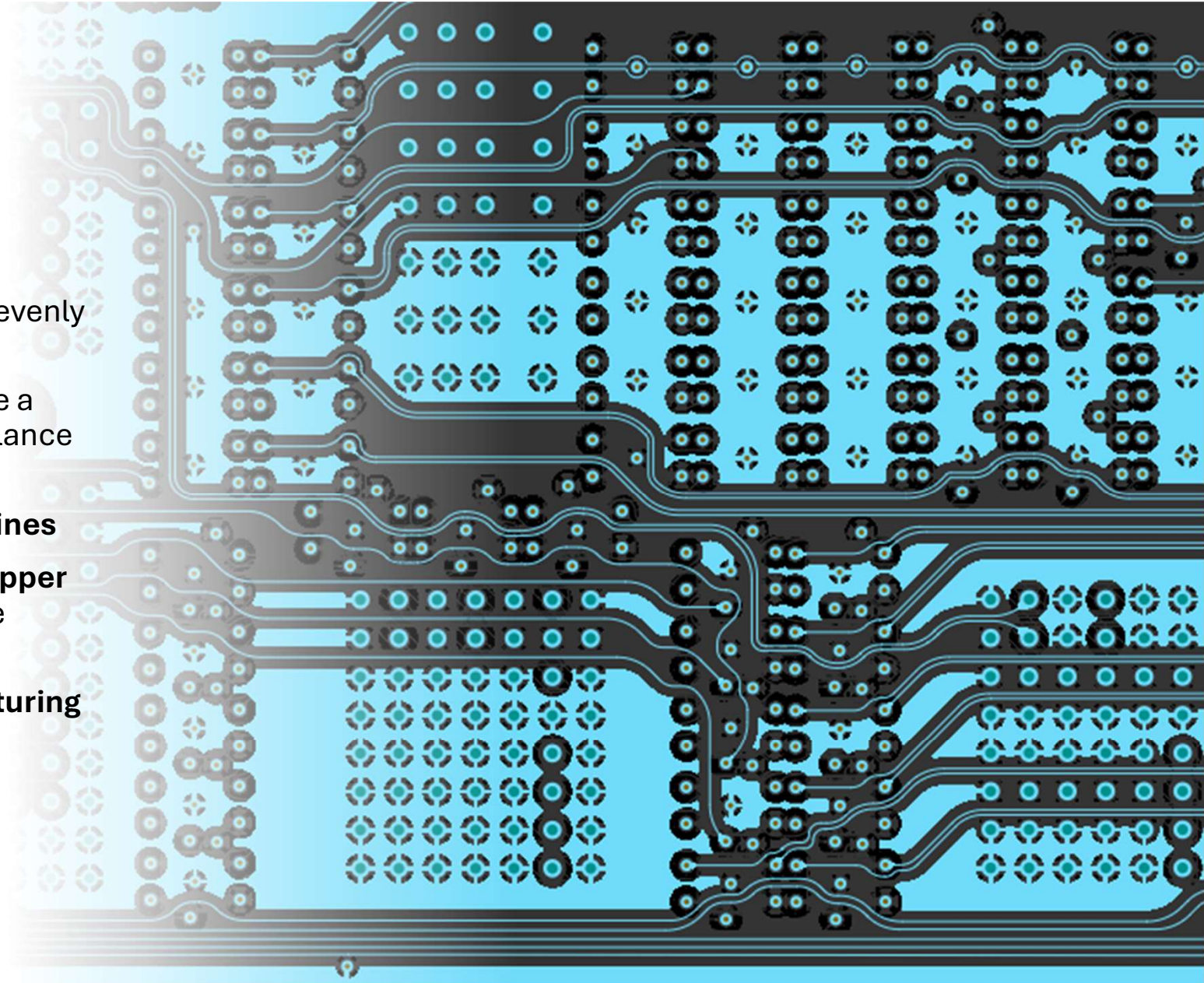
Distribute high-density signal layers evenly across the PCB stackup.

If one layer has extensive routing, use a copper fill on its opposite layer to balance the weight.

5. Consider Manufacturer's Guidelines

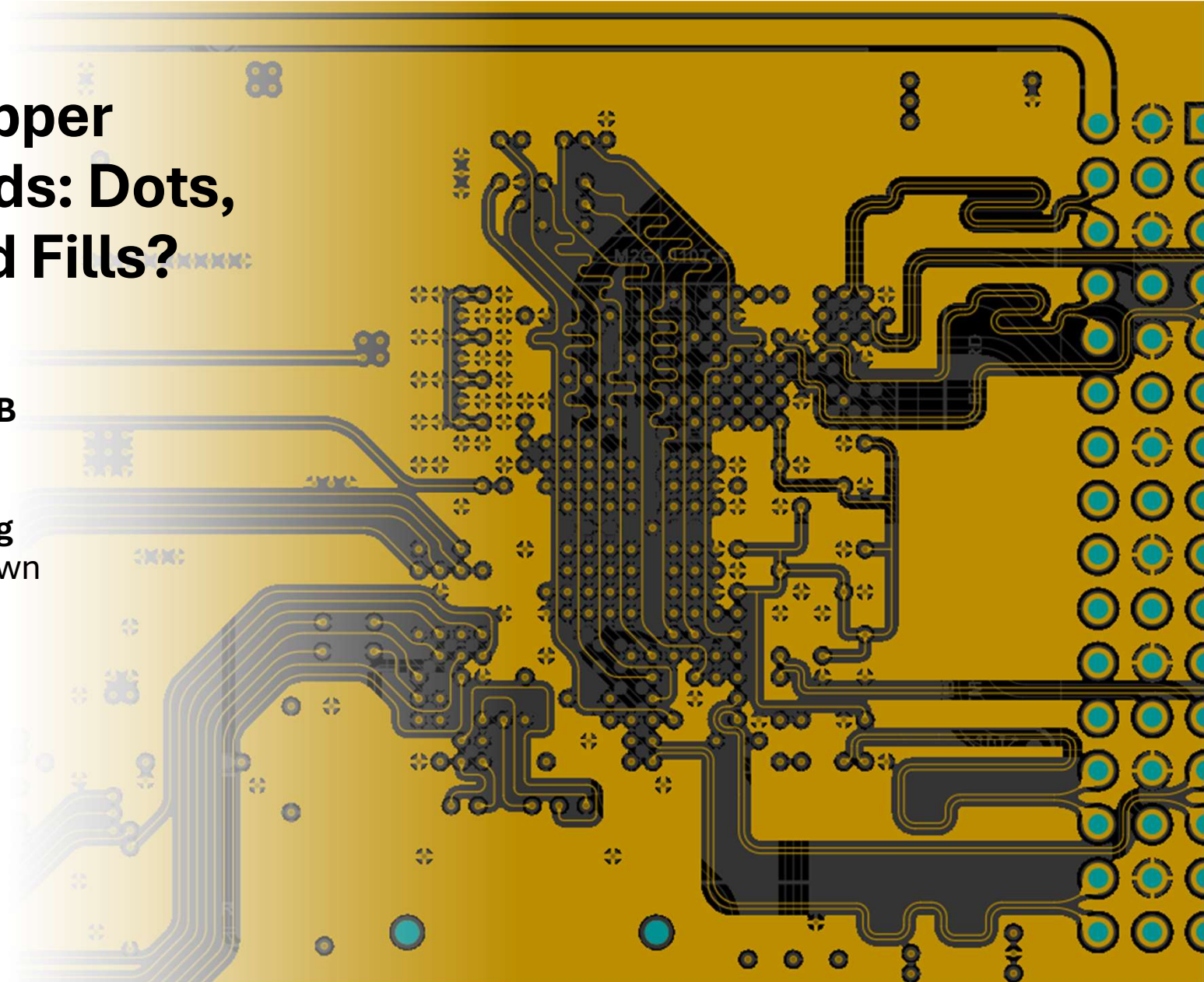
PCB manufacturers often provide **copper weight recommendations** to ensure manufacturability.

Following their **design-for-manufacturing (DFM) guidelines** reduces potential issues.



Best Types of Copper Balancing Methods: Dots, Hatching, or Solid Fills?

- The best method for **copper balancing** depends on the **PCB application, signal requirements, thermal concerns, and manufacturing constraints**. Here's a breakdown of the common methods and their pros and cons.



Solid Copper Fills (Solid Plane)

✓ Best For:

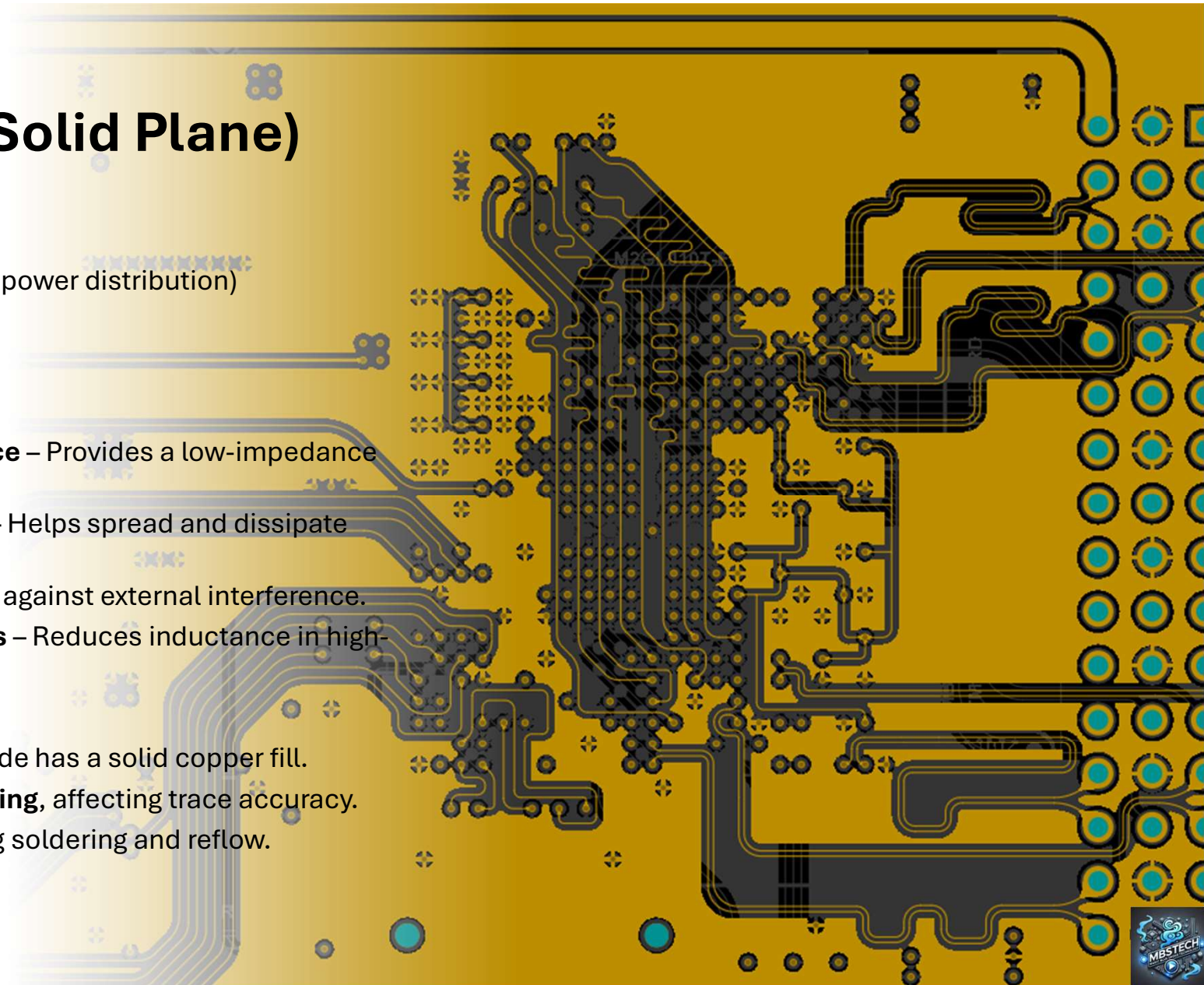
- **Power and Ground Planes**
- **High-current applications** (e.g., power distribution)
- **Thermal dissipation**
- **EMI shielding**

📌 Advantages:

- **Excellent electrical performance** – Provides a low-impedance path for power and ground.
- **Superior thermal conductivity** – Helps spread and dissipate heat.
- **Minimizes EMI** – Acts as a shield against external interference.
- **Good for high-frequency signals** – Reduces inductance in high-speed circuits.

⚠ Disadvantages:

- Can **cause warping** if only one side has a solid copper fill.
- May lead to **uneven copper etching**, affecting trace accuracy.
- Can cause **thermal stress** during soldering and reflow.



Copper Hatching (Grid or Mesh Pattern)

✓ Best For:

- High-frequency RF and Microwave PCBs
- Flex PCBs and rigid-flex designs
- Reducing PCB warping while maintaining conductivity
- Reducing solid copper effects on PCB impedance

📌 Advantages:




- **Reduces PCB warping** – Unlike solid fills, the gaps in hatching allow for even stress distribution.
- **Minimizes excess copper plating** – Reduces the risk of manufacturing issues.
- **Reduces unwanted capacitance** – Beneficial in **high-frequency designs** where solid fills could alter impedance.
- **Improves flexibility** – Ideal for **flex PCBs**.

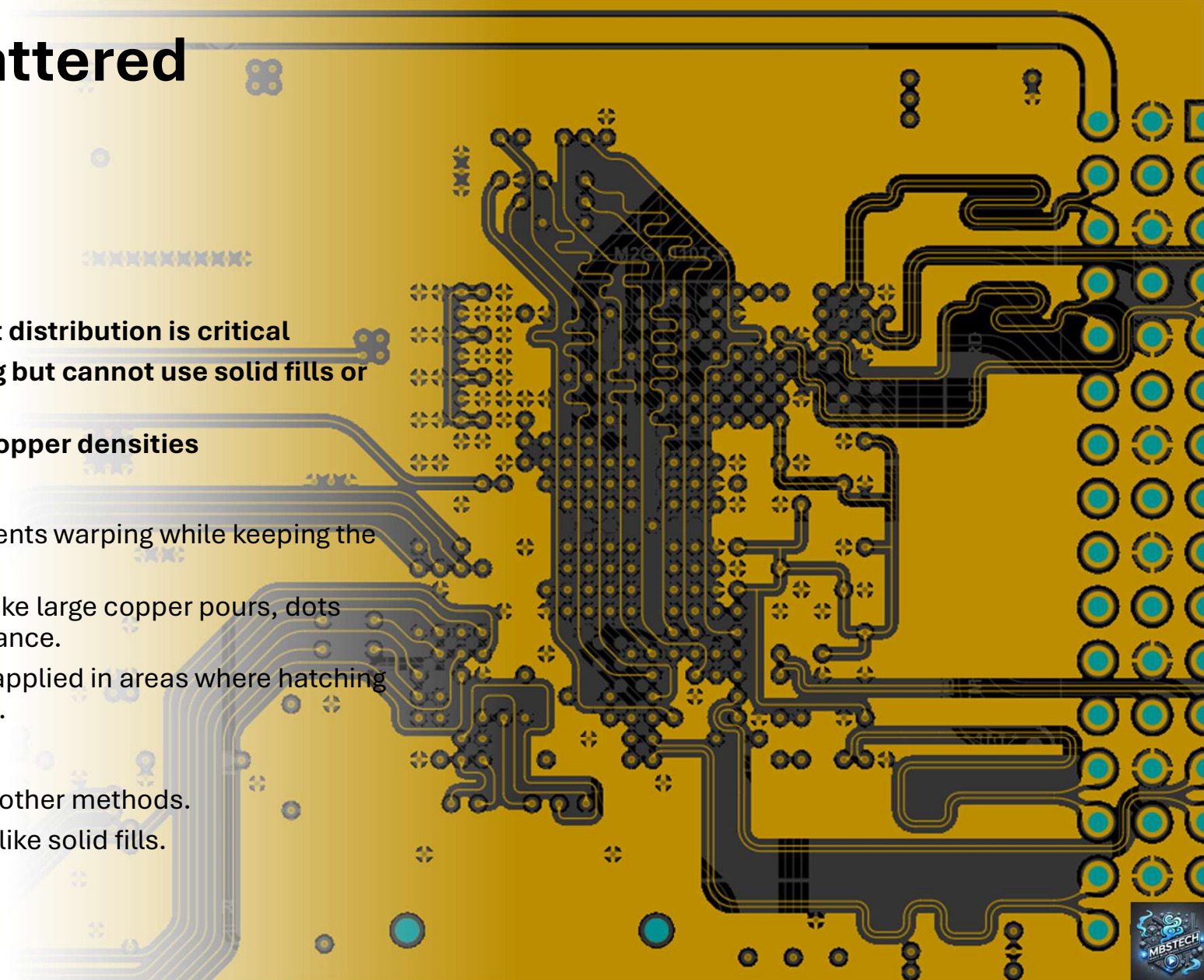
⚠ Disadvantages:

- **Slightly higher impedance** than a solid fill, which may affect performance in some designs.
- **Can act as an antenna** if not properly grounded, potentially increasing EMI.
- **Less effective for heat dissipation** compared to a solid copper plane.

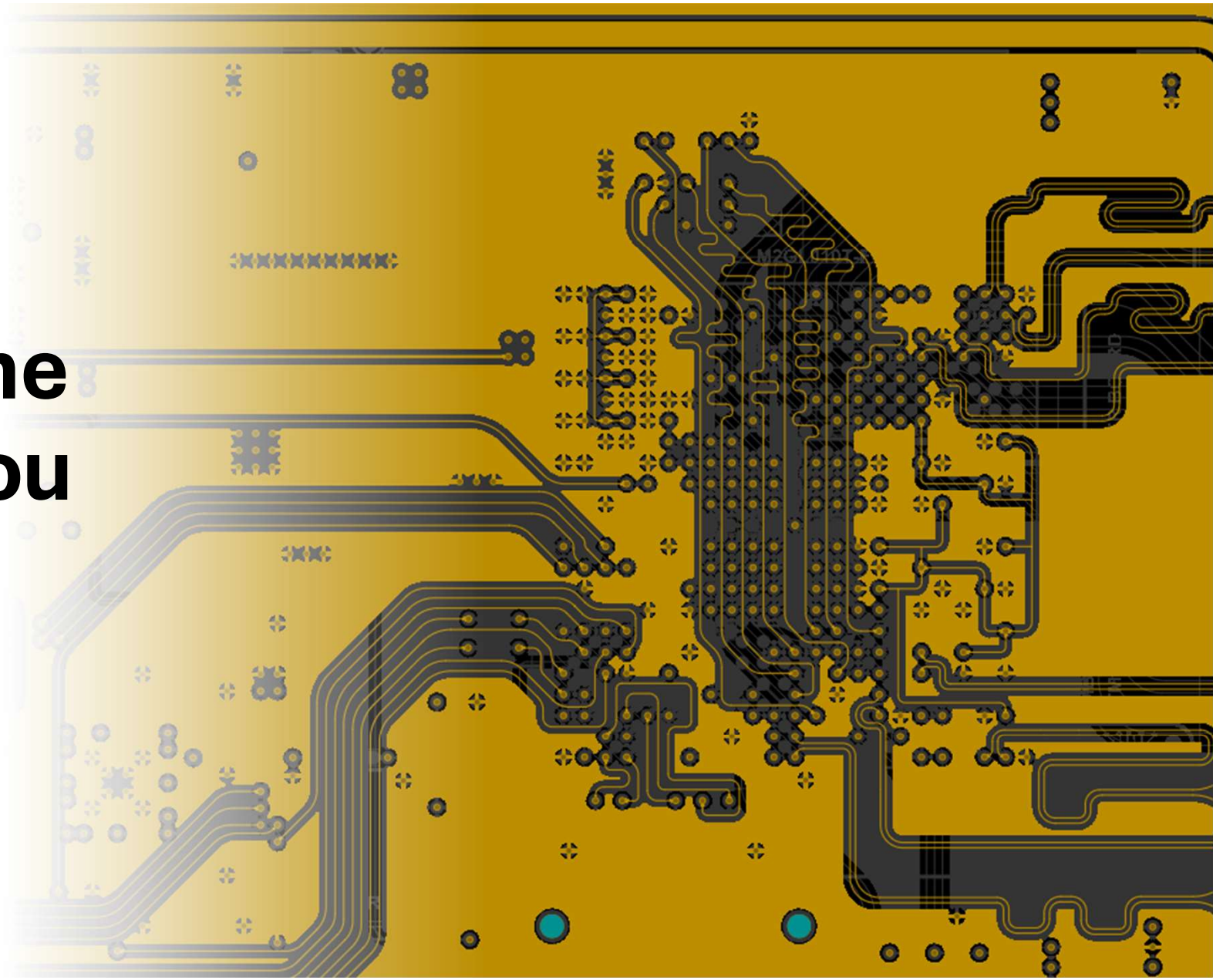


Copper Dots (Scattered Copper Fill)

-  **Best For:**
 - PCB designs where even weight distribution is critical
 - When you need some balancing but cannot use solid fills or hatching
 - Multi-layer PCBs with varying copper densities
-  **Advantages:**
 - **Good for PCB fabrication** – Prevents warping while keeping the PCB lightweight.
 - **Minimal electrical impact** – Unlike large copper pours, dots don't significantly change impedance.
 - **Works in tight spaces** – Can be applied in areas where hatching or solid fills might not be feasible.
-  **Disadvantages:**
 - **Less thermal conductivity** than other methods.
 - **Does not provide EMI shielding** like solid fills.



**Which One
Should You
Use?**



Factor

Best Choice

Power planes (high current)

◆ Solid Fill

High-frequency circuits (RF, microwave, impedance control)

◆ Hatching

Flex PCBs / Rigid-flex PCBs

◆ Hatching

EMI shielding required

◆ Solid Fill

Preventing PCB warping

◆ Hatching or Dots

Minimizing unwanted capacitance

◆ Hatching

Reducing material usage

◆ Dots or Hatching

General-purpose balancing

◆ Hatching or Dots



Conclusion

- Copper balancing is essential for ensuring the **mechanical stability, manufacturing, reliability electrical performance, and the manufacturability** of a PCB.
- This is done by using techniques like copper fills, hatching, and proper stackup design, especially in high-speed and multi-layer PCBs.
- However, it requires **careful planning** to avoid **signal integrity and thermal management issues**. designers can mitigate manufacturing defects and improve the PCB's reliability

